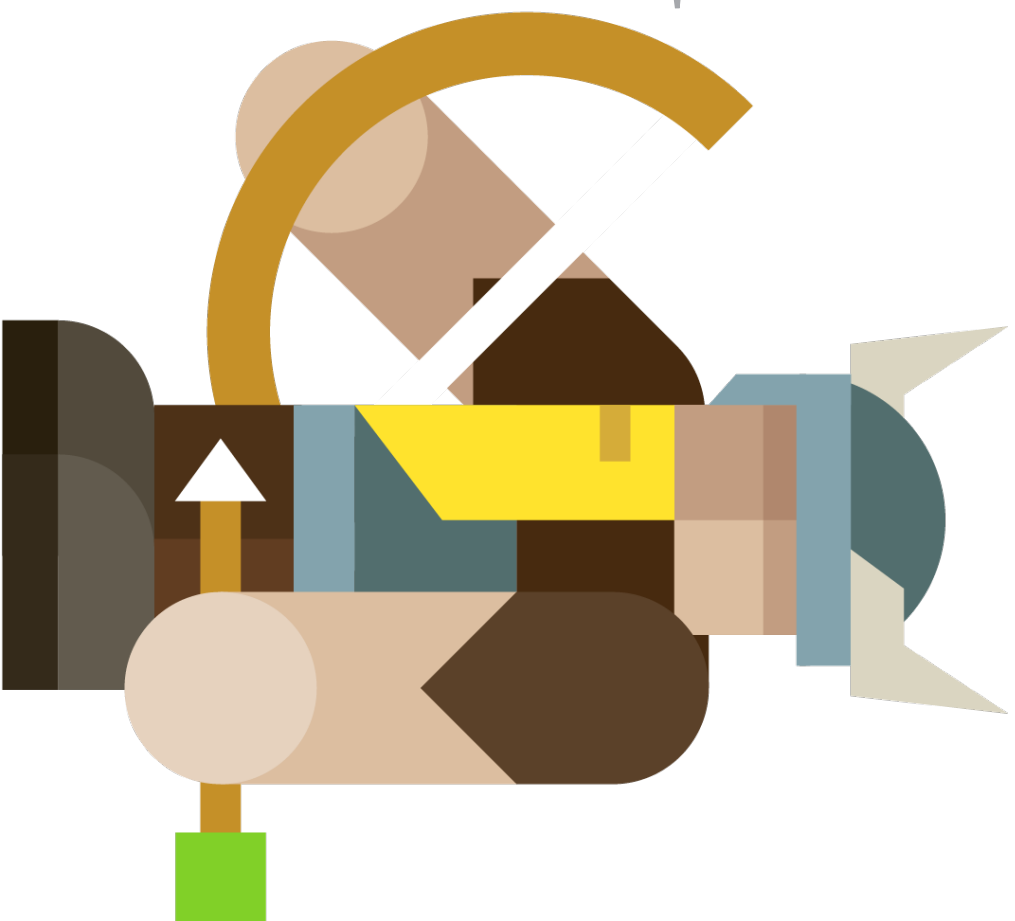


# VIKING ART

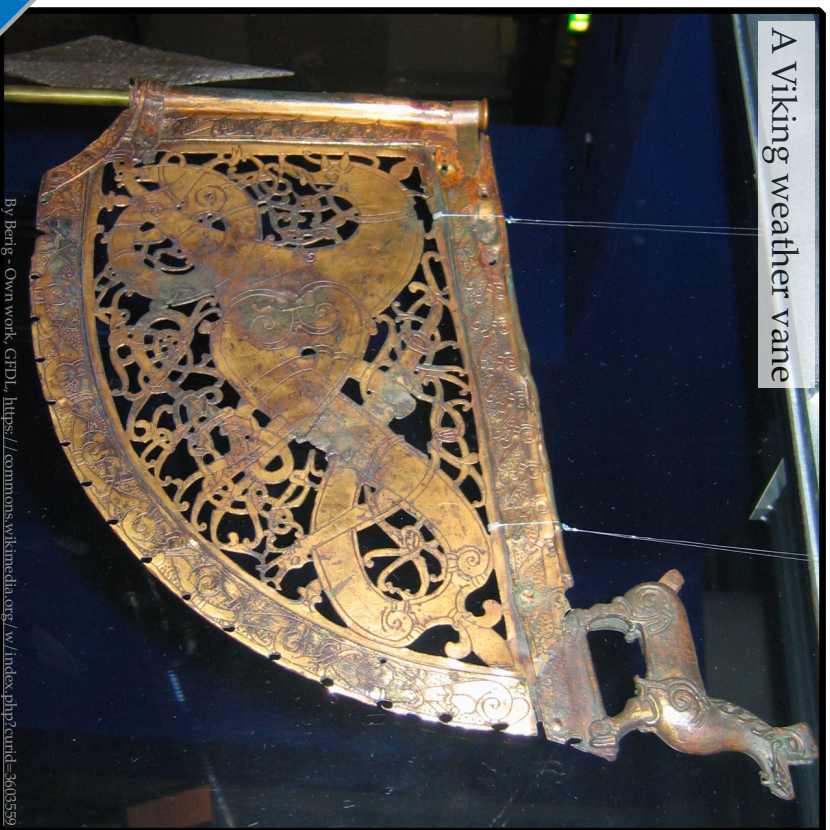
## Learning Objective:

To be able to create a piece of Viking animal artwork.

WHAT KINDS OF  
ANIMALS DO YOU  
THINK WERE POPULAR  
IN VIKING ART?



The Vikings used animals such as horses, dogs, dragons, snakes and birds in their artwork. Sometimes it's hard to tell what the animal is supposed to be!



A Viking weather vane



Reconstruction of a Jelling runestone



A Viking church door

By Berig - Own work, GFDL, <https://commons.wikimedia.org/w/index.php?curid=5603555>

By Mrs VanDort - Own work, CC BY-SA 4.0, <https://commons.wikimedia.org/w/index.php?curid=57552788>

BACK

[www.planbee.com](http://www.planbee.com)

NEXT



**What animals  
can you see?**

**What patterns can  
you see?**

**How have the animals  
been created?**



**What animal can you see?**

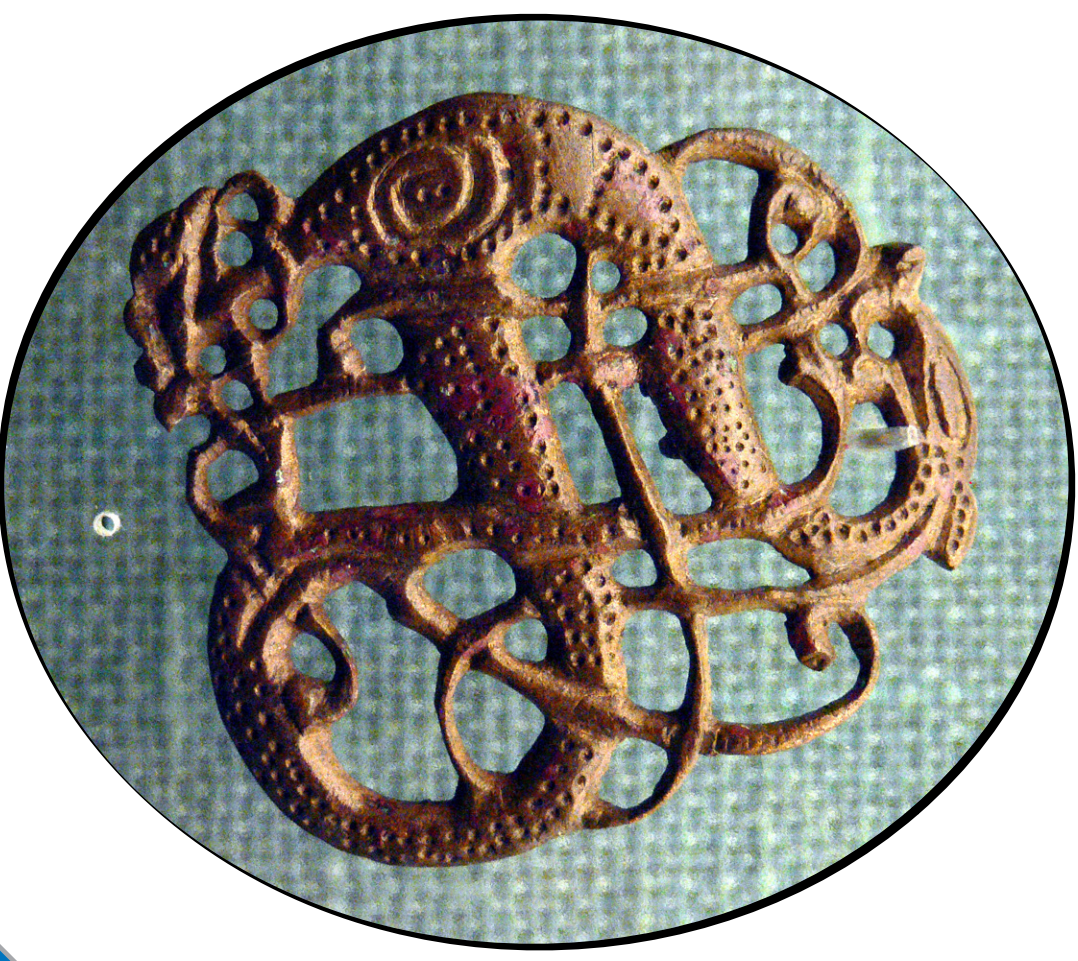
**What patterns can you see?**

**How has the animal been  
created?**

**What animal can you see?**

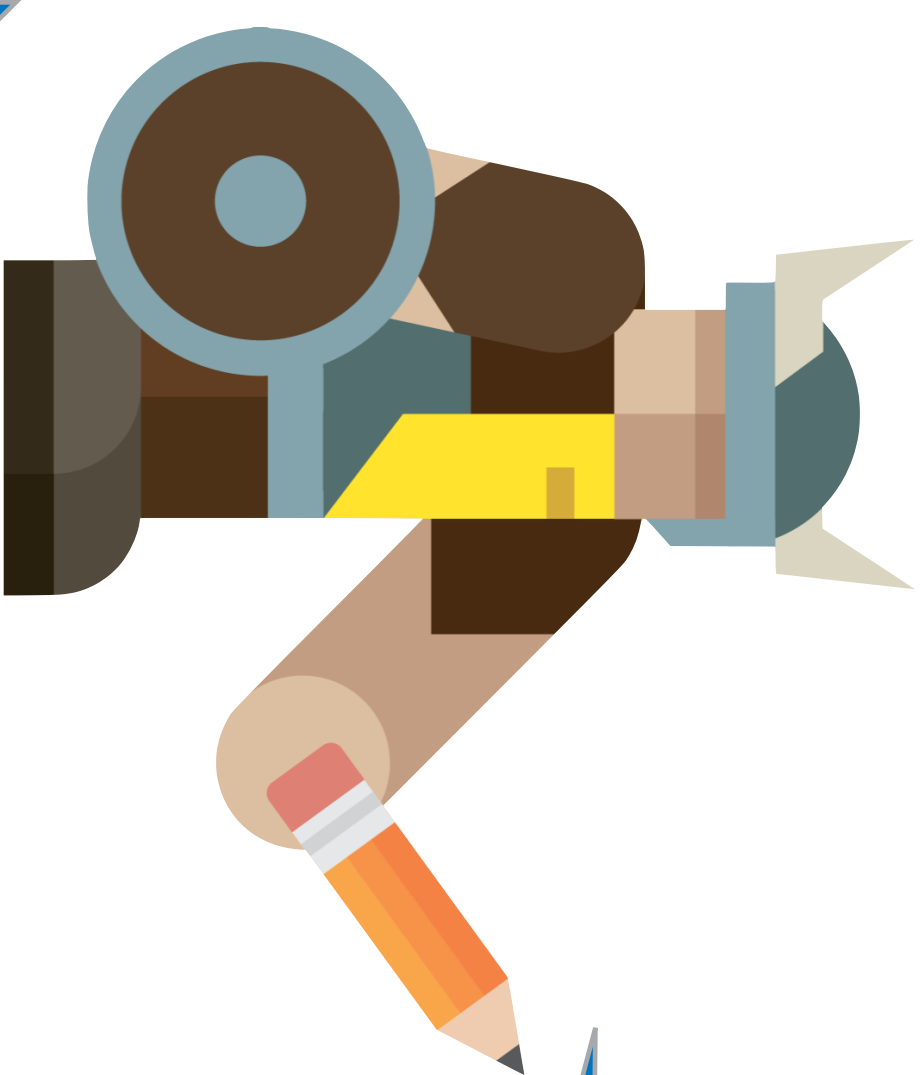
**What patterns can you see?**

**How has the animal been  
created?**



**BACK**

**NEXT**



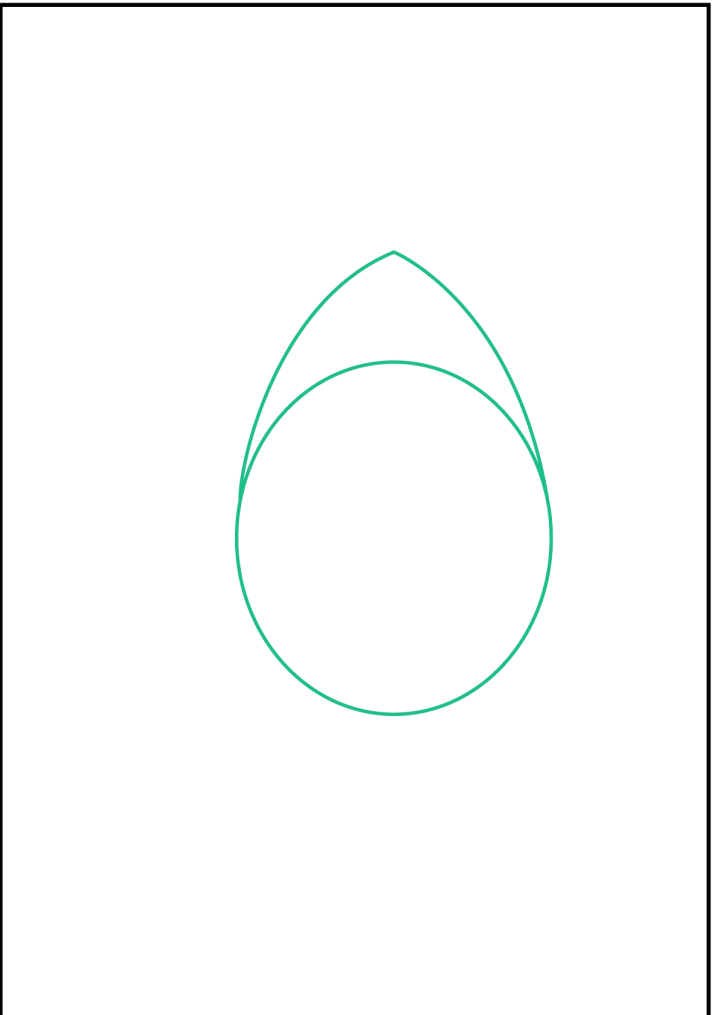
WE'RE GOING  
TO HAVE A LOOK AT  
HOW TO DRAW SOME  
BASIC ANIMAL HEADS IN A  
VIKING STYLE. HAVE YOU  
GOT A PENCIL  
READY?

BACK

[www.planbee.com](http://www.planbee.com)

NEXT

## HOW TO DRAW A SNAKE HEAD



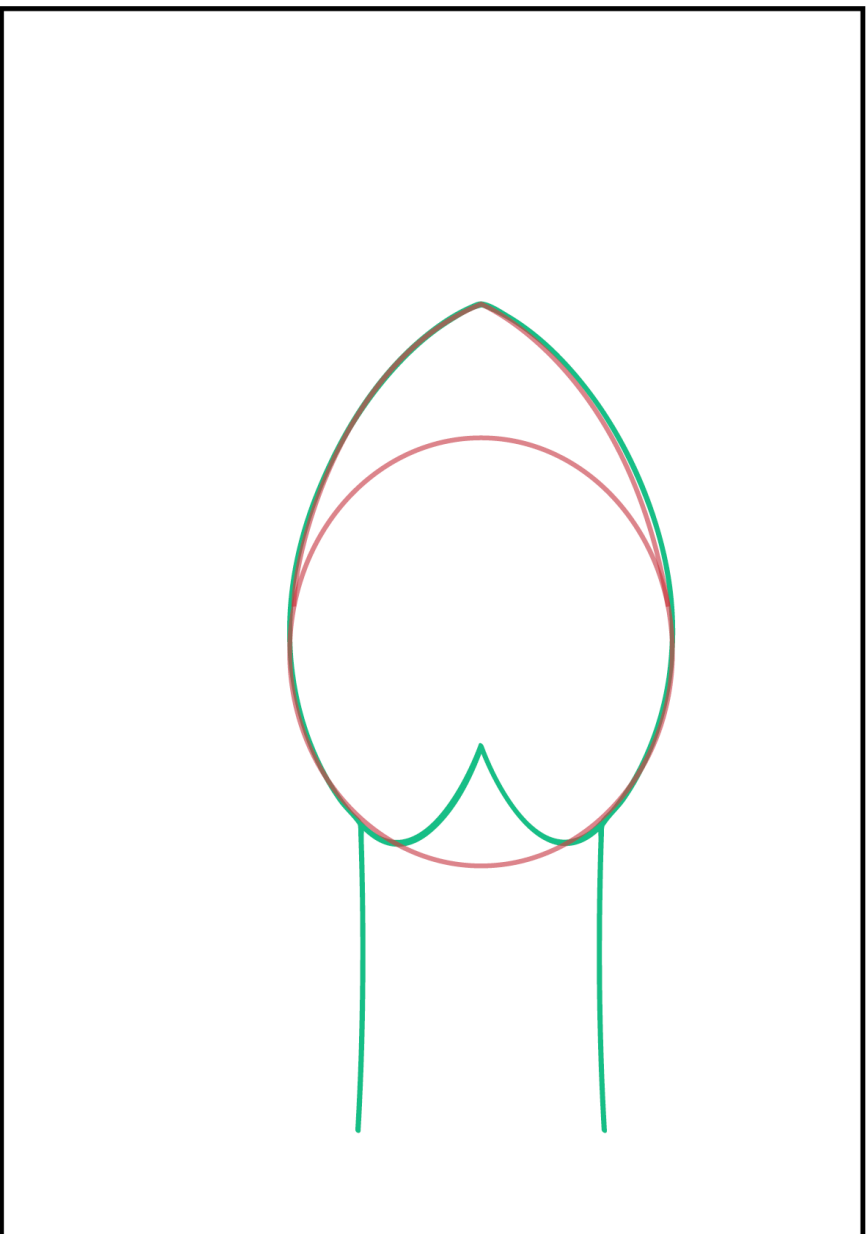
We're going to start by drawing the guide shapes. Draw these lightly.

BACK

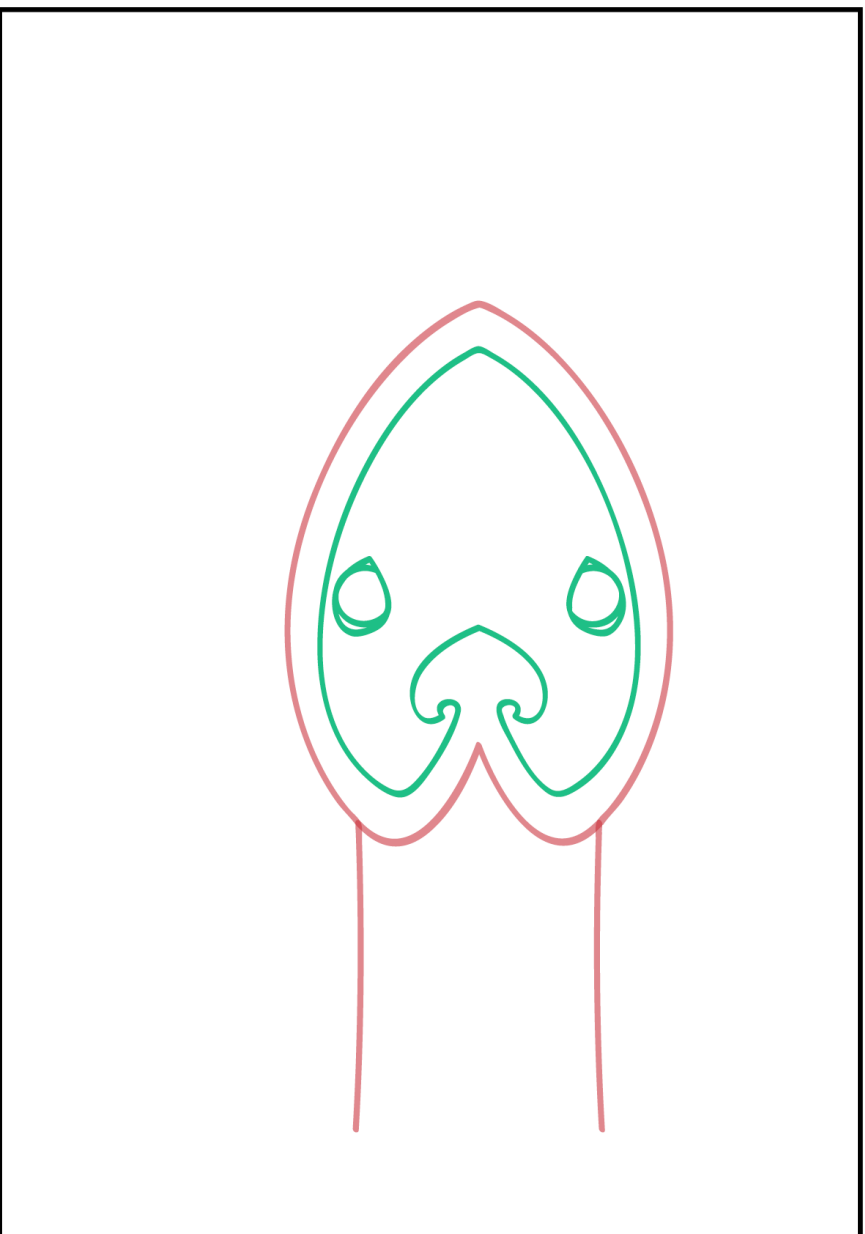
[www.planbee.com](http://www.planbee.com)

NEXT

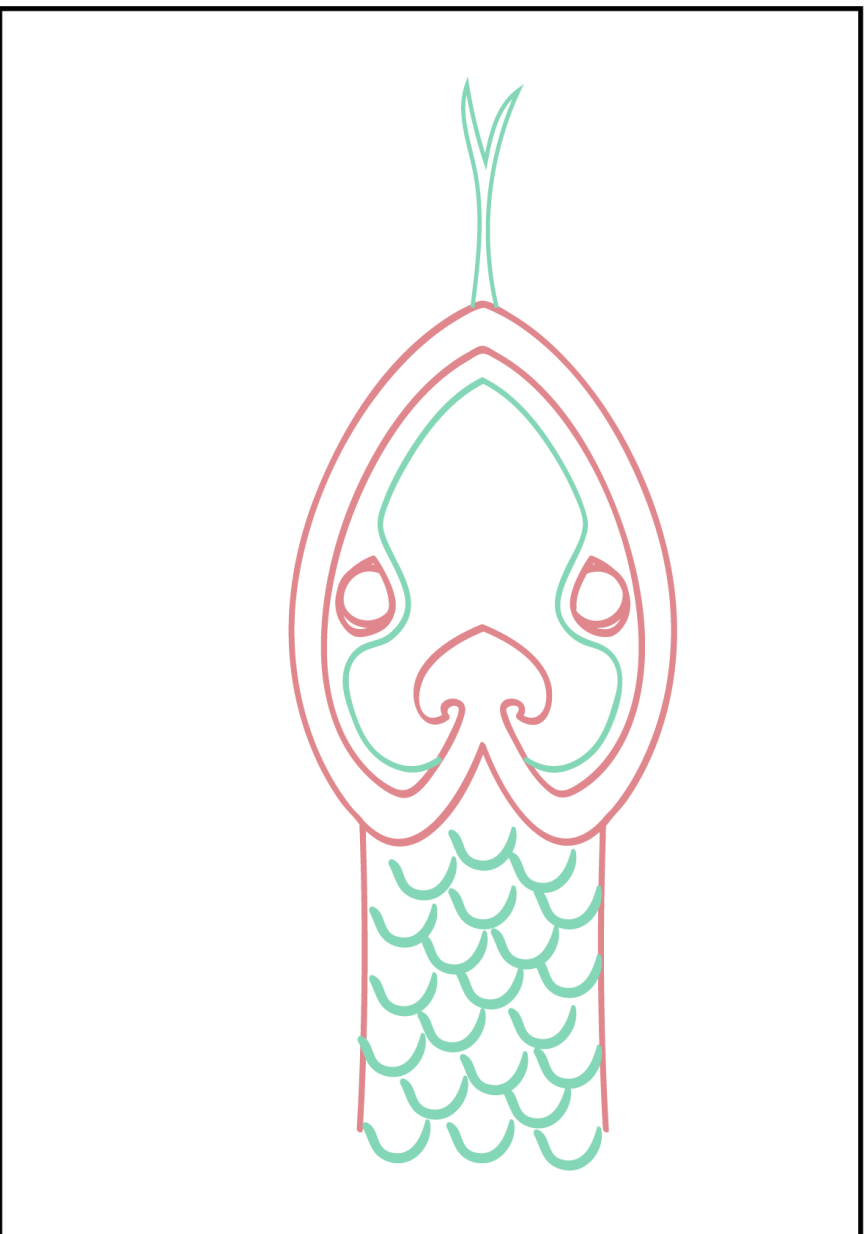




Draw two lines from the right-hand side of the circle for the neck and bring the circle into a heart shape.



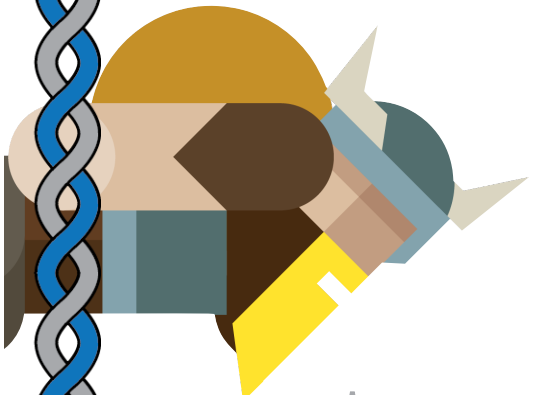
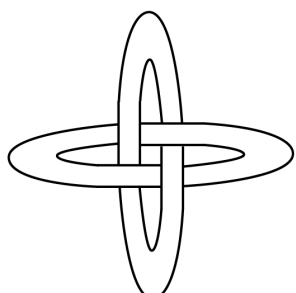
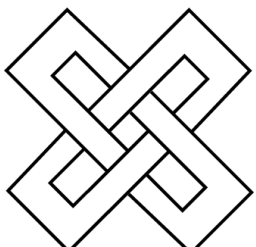
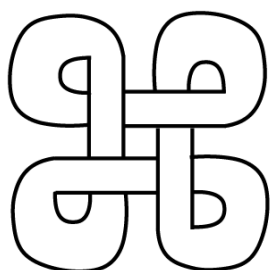
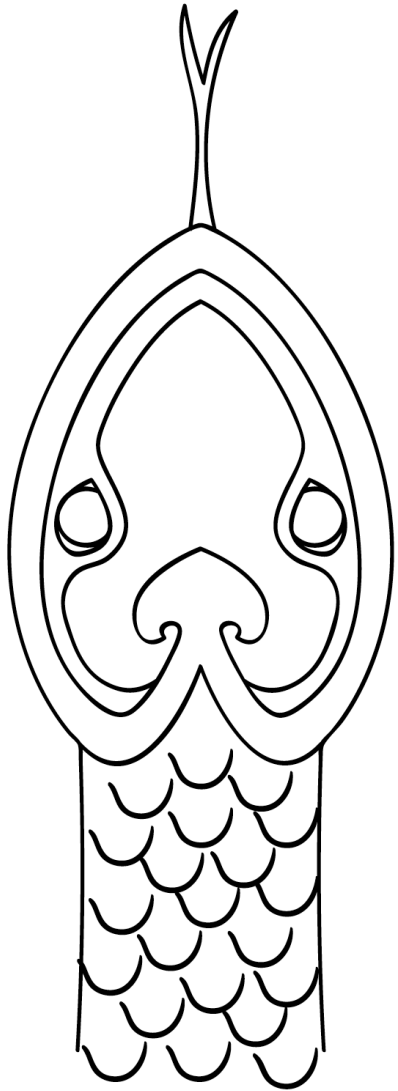
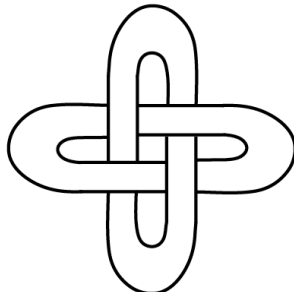
Draw a second line inside the main shape of the head and embellish the top of the snake's head. Draw two eyes. If you need to, you can rub out any of the guidelines you no longer need.



Add a third line inside the snake's head going inside the other lines. Add details like a tongue and scales.



You now have a snake's head!



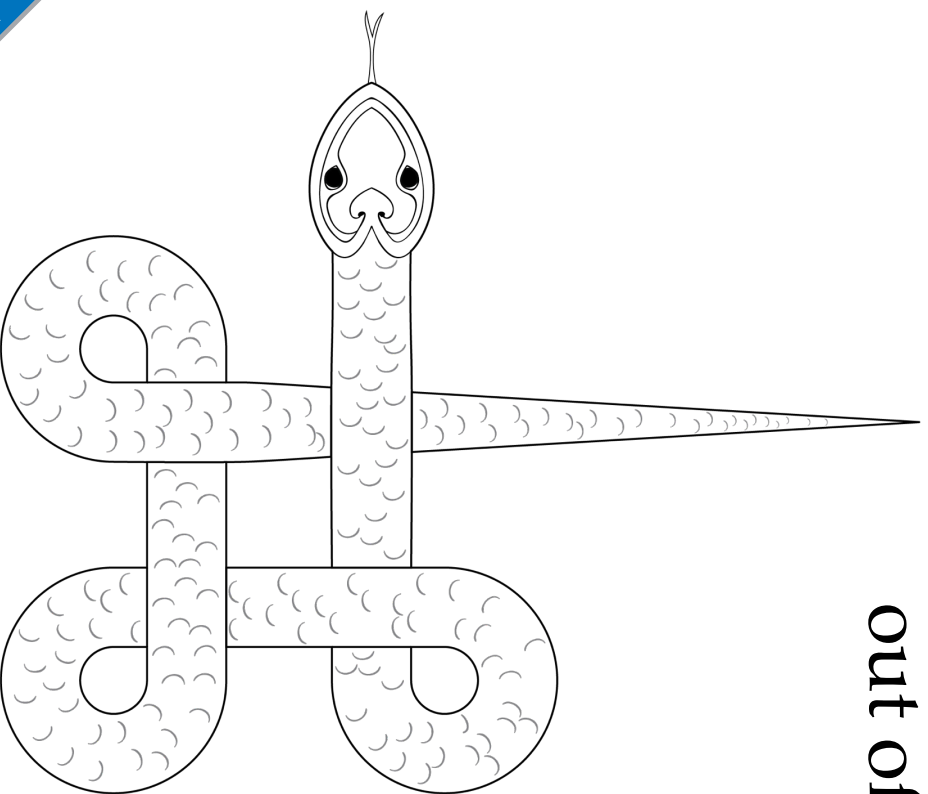
HOW COULD WE USE THE VIKING KNOTS WE DREW IN THE LAST LESSON TO COMPLETE THIS VIKING SNAKE?

BACK

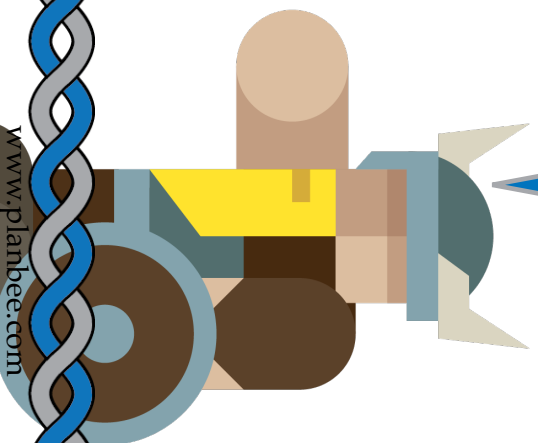
www.planbee.com

NEXT

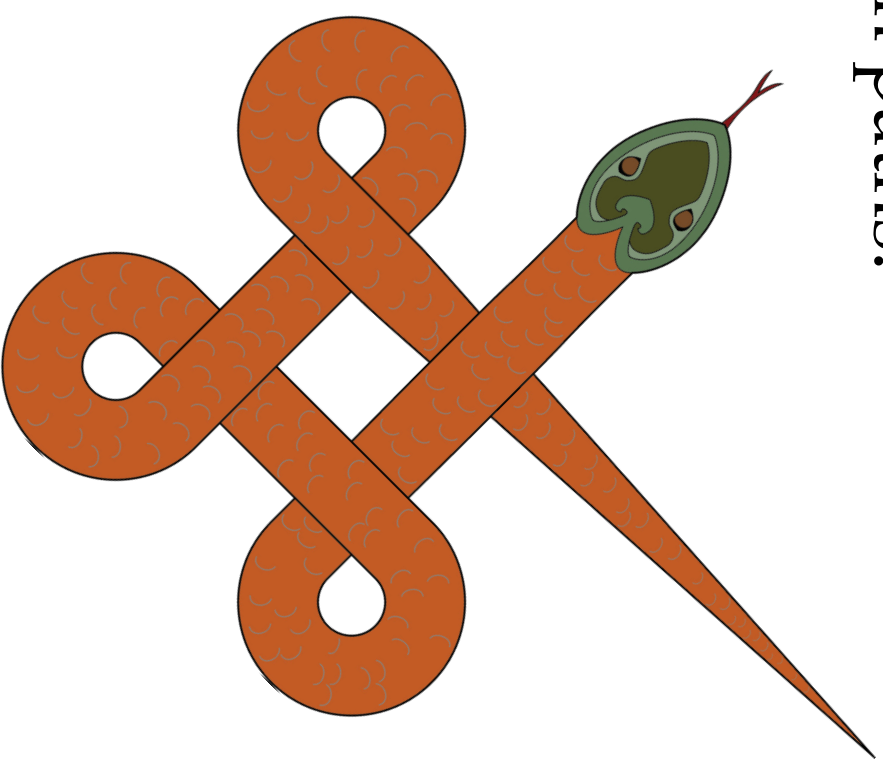
You can create a knot and then bring the head and tail out of one of the open paths.



CAN YOU  
HAVE A GO AT  
CREATING A  
KNOTTED  
SNAKE?



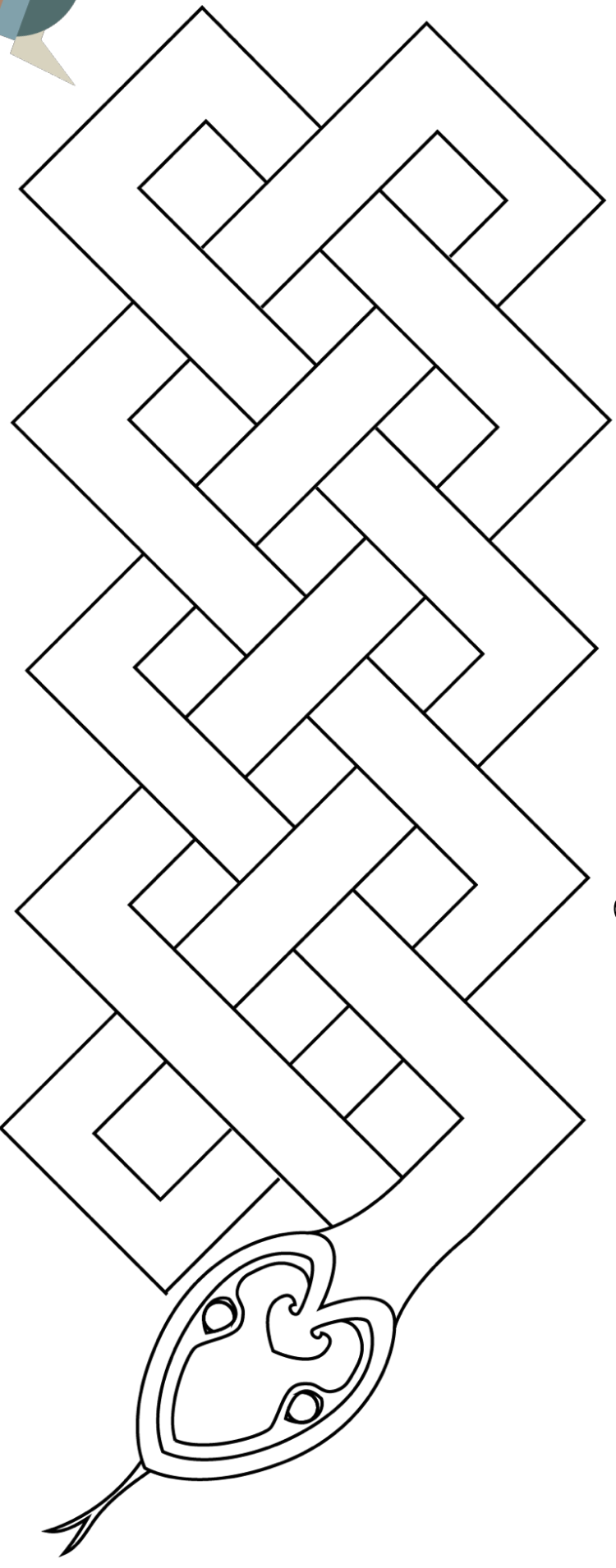
www.planbee.com



BACK

NEXT

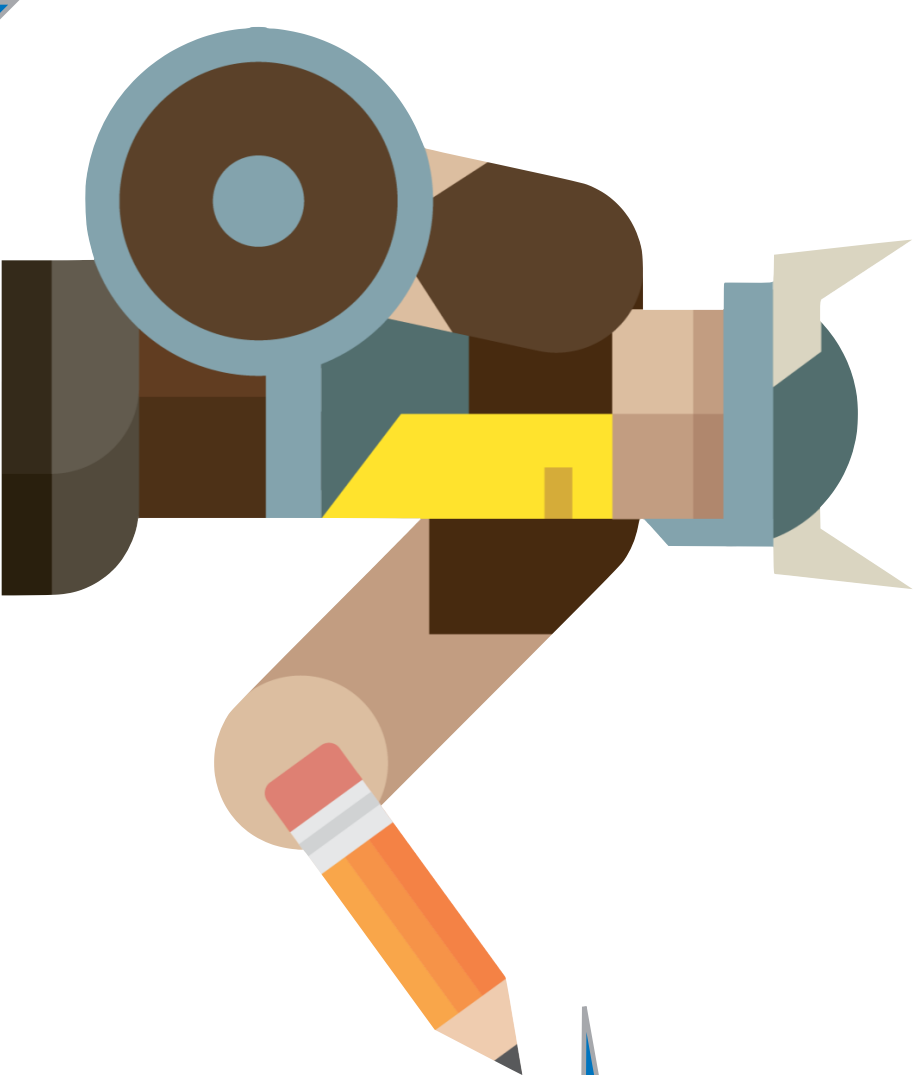
Here's another example of how you can incorporate the snake head and knot to create a Viking animal.



WHAT PATTERNS AND COLOURS COULD YOU ADD TO THIS SNAKE?



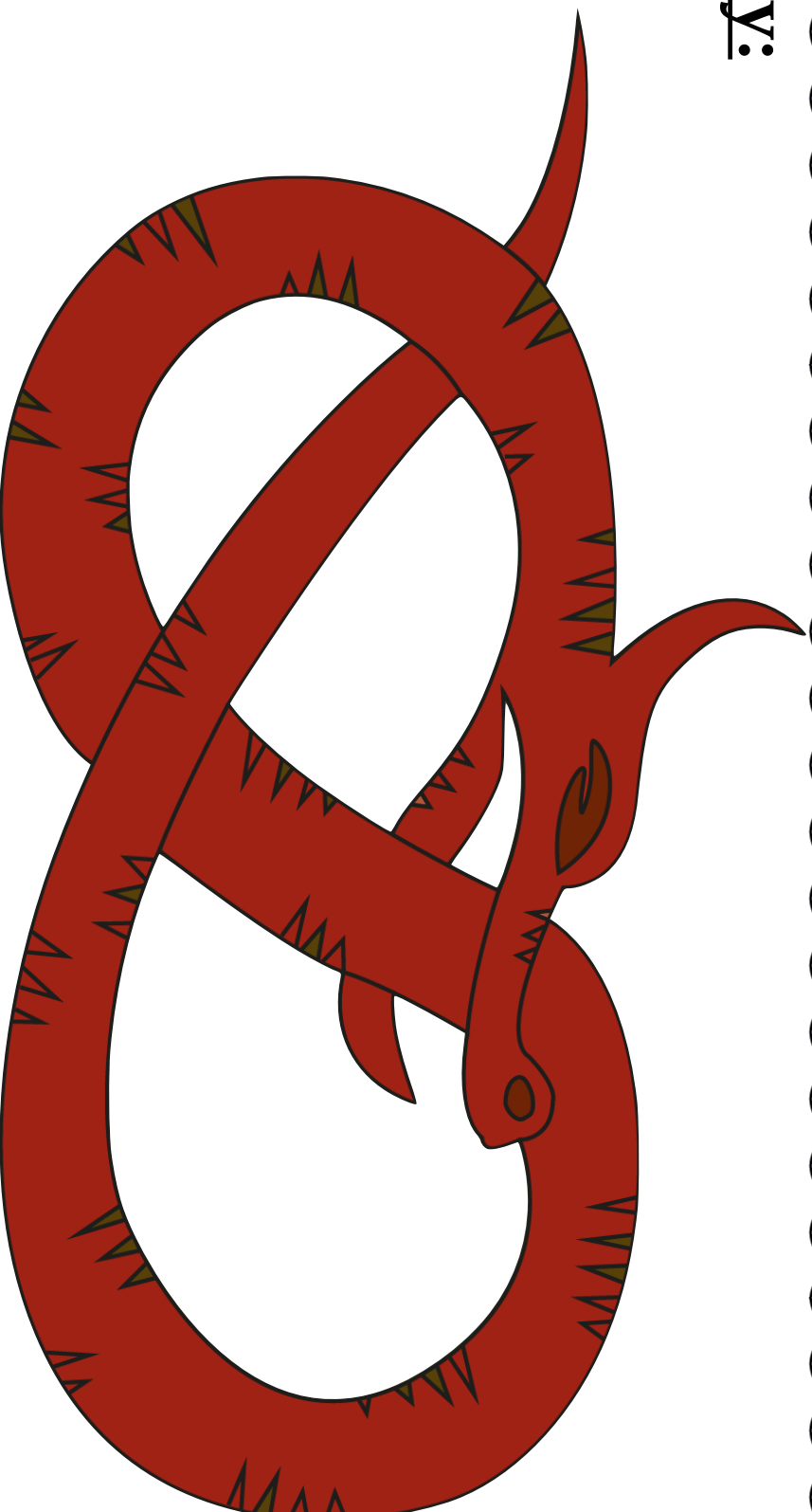
TODAY  
YOU'RE GOING TO  
CREATE SOME VIKING  
ANIMALS OF YOUR OWN!  
ARE YOU READY?



BACK

NEXT

Plenary:



Can you draw this Viking animal?  
**You have five minutes!**