


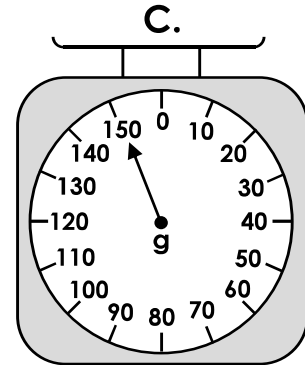
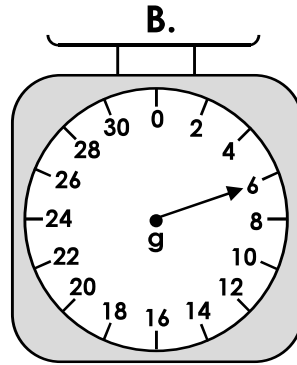
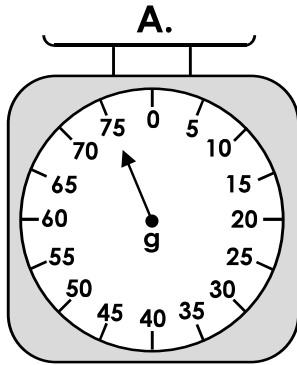
Monday – Measure Mass in Grams

1. Match each item to the correct scale.

raspberry  6g

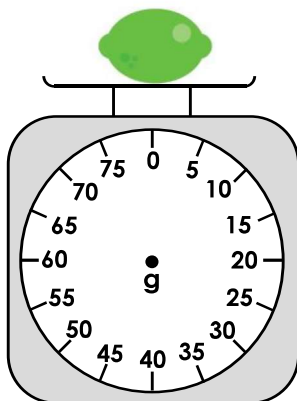
potato  150g

apple  75g

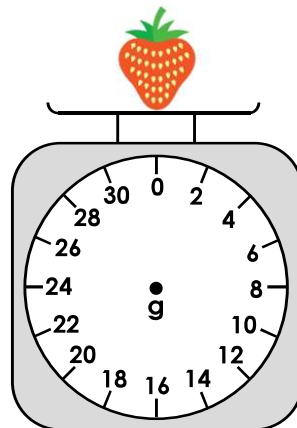


2. Draw the pointer in the correct position on the weighing scales.

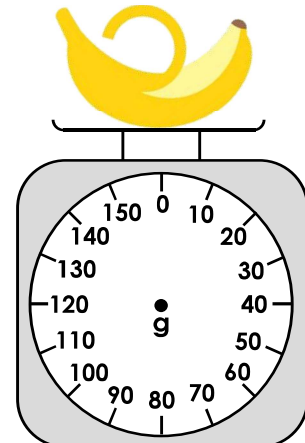
75g



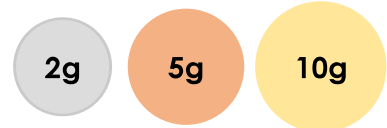
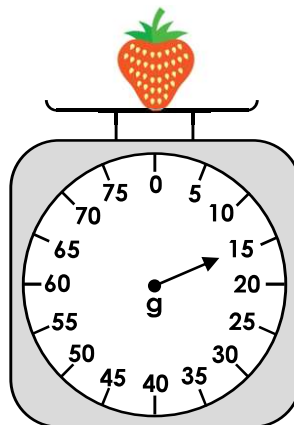
12g



140g

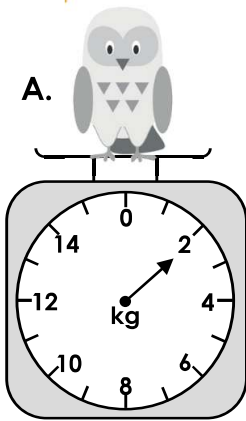


3. The pear weighs twice as much as the strawberry. Charlie has some 2g, 5g and 10g weights. Which weights could he use to balance the scales? Find 3 possible answers.



Tuesday – Measure Mass (kg)

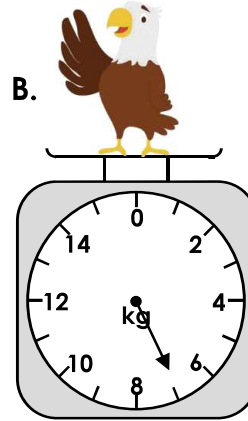
1. Draw a line from the animal to the correct mass.



2g

2kg

1kg

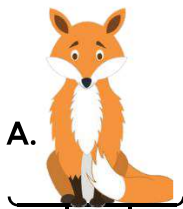


7g

7kg

8kg

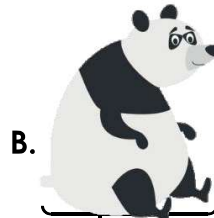
2. Put an 'X' in the correct the box to show whether each statement is correct or incorrect.



The fox weighs 15kg.

Correct

Incorrect

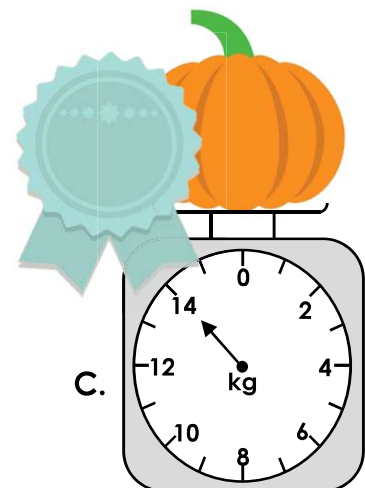
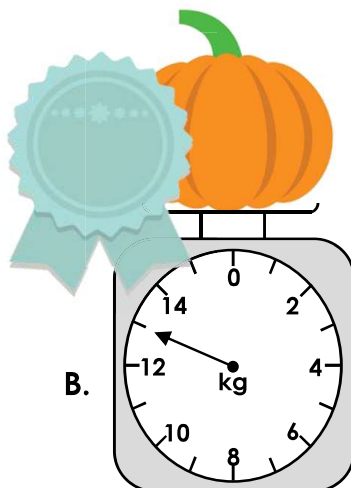
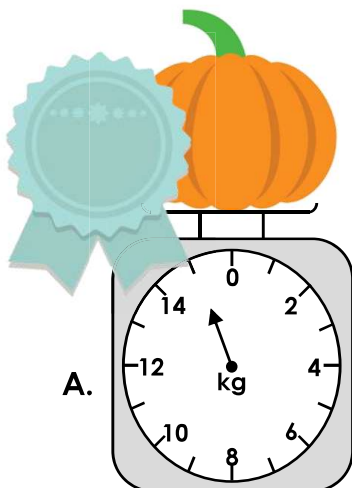


The panda weighs 65kg.

Correct

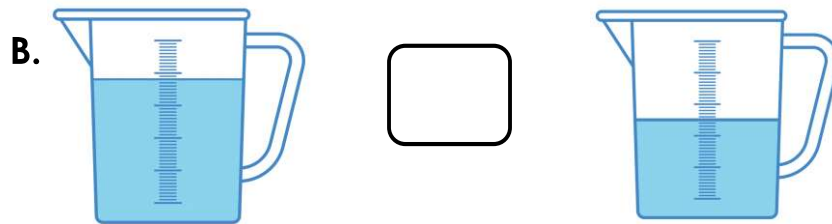
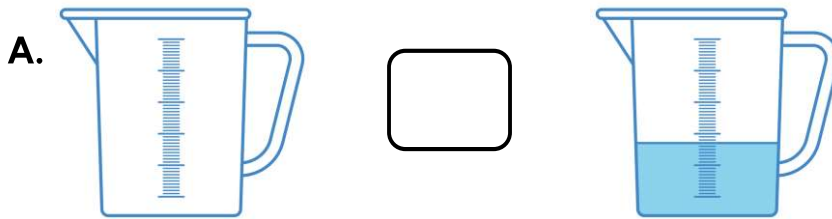
Incorrect

3. Three farmers are having a pumpkin growing competition. The heaviest pumpkin wins! Write on the ribbons which pumpkin came 1st, 2nd and 3rd.

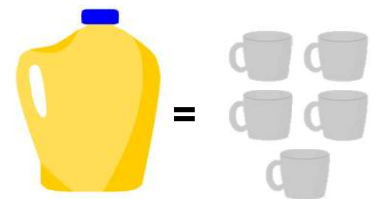
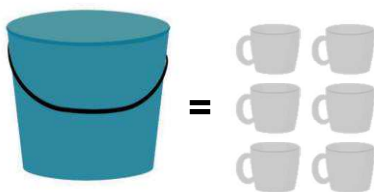


Wednesday – Compare Capacity

1. Use $>$, $<$ or $=$ to complete the statements below.



2. Order the capacity of the containers from smallest to greatest.



A.

B.

C.



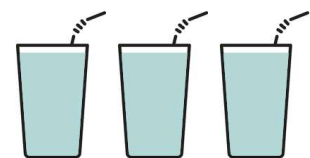
3. Sam and Aisha are comparing the total volume of their glasses.



My glasses have a greater volume because I have four glasses.



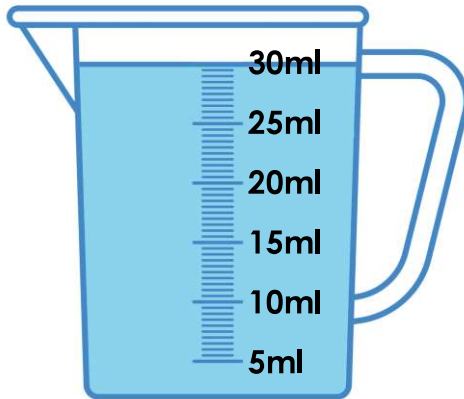
My glasses have a greater volume because all of my glasses are full.



Who is correct? Explain your answer.

Thursday – Millilitres

1. Look at the container below. 15ml is poured into a cup. Circle how much liquid would be left in the container.



20ml

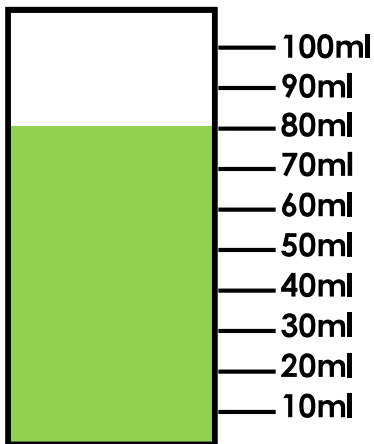
10ml

15ml

2. Each cup holds 25ml of water. Draw a line on the jug to show how much is needed to fill the cups.



3. Sam is making slime. He needs to mix 45ml of coloured water and 35ml of glue. Is Sam correct? Explain your answer.



I still need to add 10ml of glue.