

Different types of sentences.

We will be reviewing general sentence structure and then learning about questions and commands.

Different types of sentences.

There are four basic types of sentence in the English language.

Questions:

How much does it cost?

Statements:

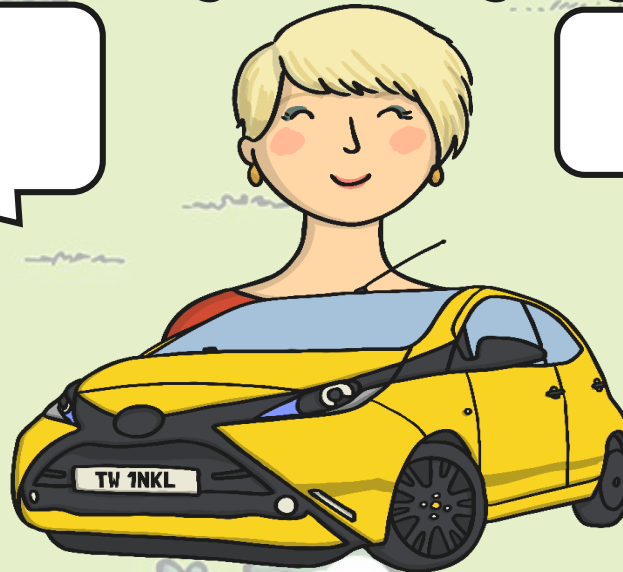
The car is yellow.

Commands:

Let me drive your car.

Exclamations:

What a lovely car it is!



Different types of sentences.

Monday – Sentence writing

Tuesday – Questions

Wednesday – Commands

Thursday – Big Write



Monday

L.C. Can I write using correct sentence structure?

twinkl

Sentences

Sentences are the blocks which the English Language is built from.

A sentence is a group of words which is a complete thought. It must make sense on its own. It must contain a verb. A verb is a doing word.

Verb examples

do, go, went, catch, caught, buy, see, saw, run, ran, dance, danced, eat, ate, drink.

Which of these groups of words really are sentences?
Think about whether anything happens. Can you put
them together correctly?

Sentence

Non-sentence

London Bridge

It took a long while.

At the bottom of the
stairs.

We caught the train.

Sentences

At the start of every sentence is a capital letter. This is easy to remember because it is **ALWAYS** true.

Correct these sentences so that they show the correct punctuation. Write them in your exercise book.

1. every single snowflake is different.
2. have you seen that new film about wizards?
3. get off that table before it breaks!

Sentences

How can you tell when a reader reaches the end of a sentence?

There should be a pause as the reader takes a breath ready to read the next sentence.



Close your eyes and use your fingers to count how many sentences you hear when the adult reads the passage on the next slide.

Sentences



Cats sleep a lot. They can sleep anywhere. They sleep on newspapers, on windowsills and even in baskets. When they wake up they have a good stretch. Sometimes they go straight back to sleep again.

Answer = There are 5 sentences in that passage.

Writing sentences

Write 4 sentences about the image. These should be statements, meaning that they are general sentences used to state something.



Be sure to use a capital letter at the beginning and a full stop at the end.





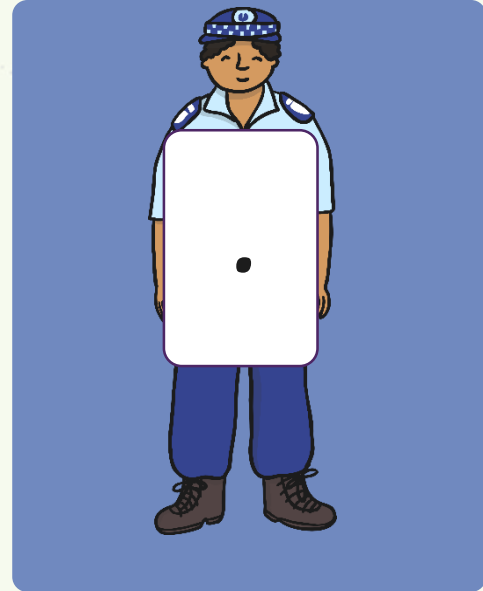
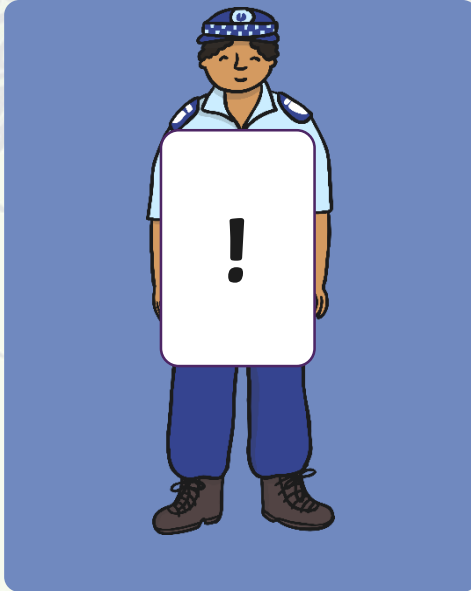
Tuesday

L.C. Can I write and punctuate questions?

twinkl

Sentences: Punctuation

As well as starting with a capital letter, every sentence also ends with one of three punctuation marks: an exclamation mark, a full stop or a question mark.



If it doesn't have one we have an emergency.

Sentences: Punctuation

Full stops

Used for general sentences which state something (**statements**).

e.g. Apples can be green or red.



Exclamation Marks

Used for **exclamations**, possibly sudden, or strong emotions. They can be used for orders also (**commands**).

e.g. What a mess!
Clean it up!



Question Marks

Used when a sentence is asking something and has an answer (**questions**).

e.g. Can I have some pudding?



Today we are focussing on questions, tomorrow we will look at commands.

Questions



Questions:

- Questions ask something.
- They start with a **capital letter** and finish with a **question mark**.
- They can be answered.
- They include a question word e.g. what, where, how, when, why, which, who, does, is, should...

Examples of questions?

How do you like your eggs in the morning?



What is behind the sofa?



When does the film finish?



How much is it?



Questions

Think of some questions about the picture below. Remember to use the question words. Make them as long or as short as you like.

Write your questions.
Remember to use a capital letter at the beginning and a question mark at the end.



e.g. Where are the people?





Wednesday

L.C. Can I write and punctuate commands?

twinkl

Commands

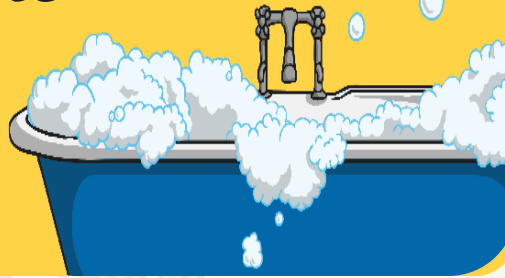


Command:

- A command is an order – giving someone an instruction or telling them to do something.
- It usually begins with an imperative bossy verb e.g. get, do, switch, tidy...
- It can be negative e.g. ‘Don’t stop!’
- It can end with either a full stop or an exclamation mark.

Commands

Get in the bath.



Eat your sprouts.



Get out of here!



Take off your shoes and place them under the bench.



Types of Sentences

Think of some commands that a teacher might say. Make sure that they give direct orders.

Write your commands.

Remember to use a capital letter at the beginning and either a full stop or exclamation mark at the end.



e.g. Tidy up!





Thursday

L.C. Can I write sentences including questions and commands?

twinkl

Write about the alien.

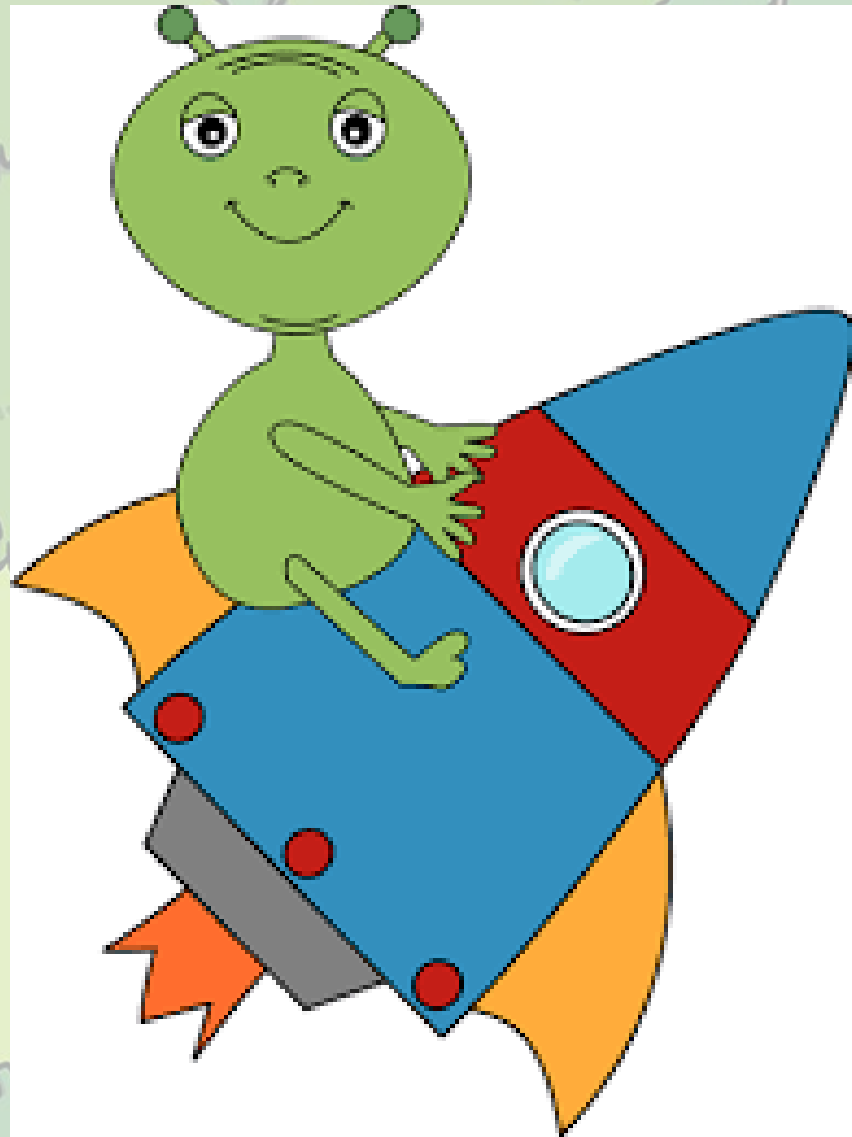
Include in your writing at least 1 statement, 1 question and 1 command.

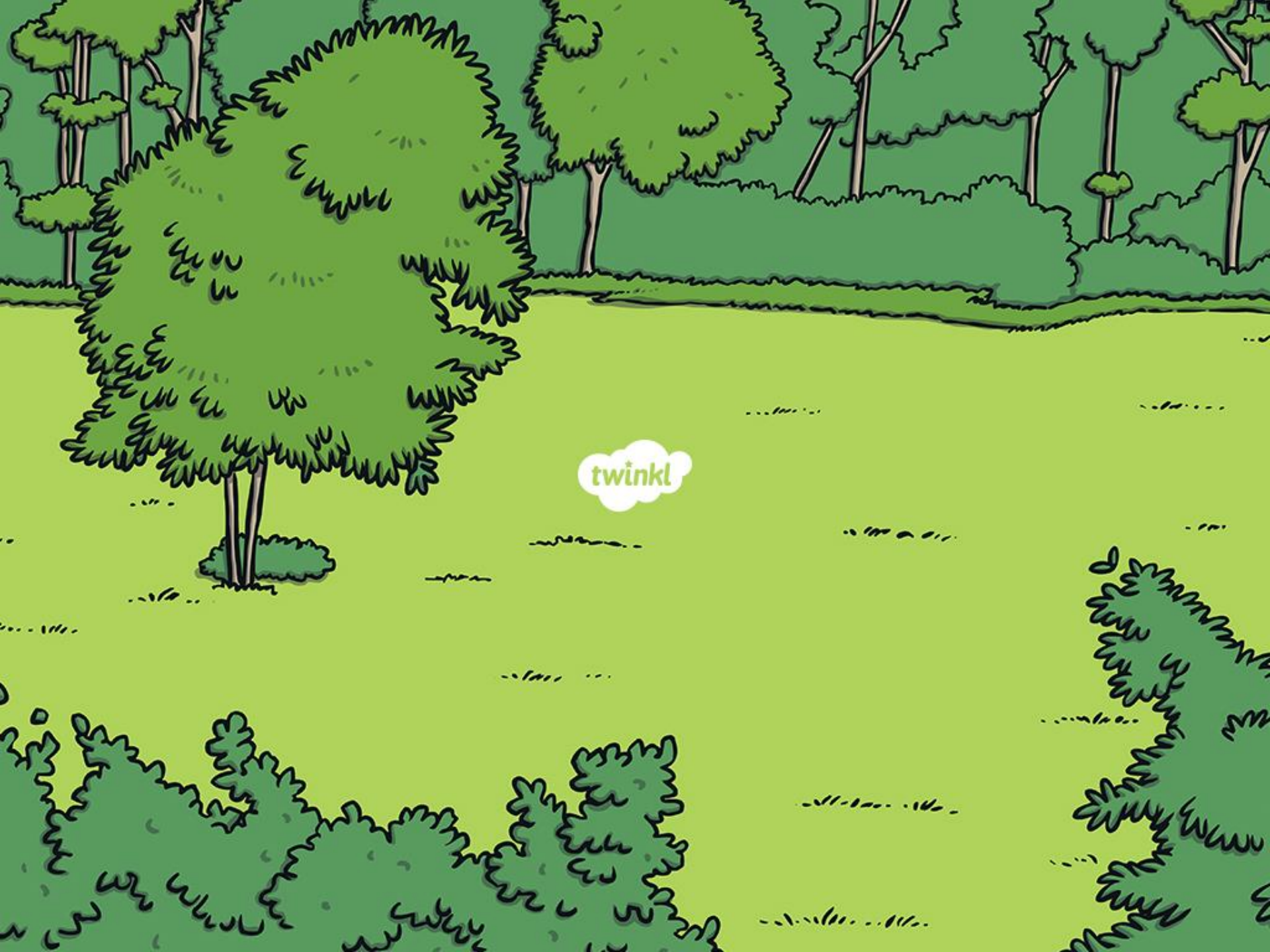
Think about:

What you know about the alien.

What you want to know. What you might ask it.

What you want it to do (show you something, leave you alone etc.)





twinkl