



Autumn Term no. 3
5th October 2015



Montalbo Nursery Newsletter

Montalbo Nursery and School

Did you spot the fantastic photograph of our new starters in Nursery and Reception classes in the Teesdale Mercury?

Ring up to have a look around Nursery (and School) to ensure you secure a place for when your child is 3. It's never too soon to start looking!

School tel: 01833 637718

or email montalbo@durhamlearning.net

for all your queries.

If your child will not be attending a session due to illness, appointment, holiday etc... please remember to let us know before 9.15am if possible!

Please make cheques out to Montalbo School Fund for all Montalbo Extra payments.

If your child suffers from sickness and diarrhoea they can not return to nursery until 48 hrs after the last time they were sick or had a bout of diarrhoea. These are County guidelines to prevent the spreading of the illness.

We try to encourage children to be independent in Nursery so it helps greatly if you can ensure children have easy fastening shoes, trousers etc.

**Remember ...
all children should
bring at least one
change of clothes to
leave at nursery.**

Starting School 2016

Do you have a child who will be 5, on or between 1st September 2016 and 31st August 2017?

If so you will soon be able to apply for a school place.

Please ring and book an appointment to be shown around the school by Ms Fawcett.

Applications for all primary schools are now submitted online at:

www.Durham.gov.uk/schooladmissions.

You will be able to access a copy of the guide for parents "Primary School Admissions in County Durham 2016/2017" which will contain essential information that will help you in making your application. **Applications need to be submitted by 15th January 2016**

Remember even if you already have older brothers and sisters in school you need to fill in an application form.

WOW!

Has your child done something at home recently that has made you say WOW! If so take one of our WOW cards – fill it in then we can share it with everyone at Nursery.

We only have one WOW on our wall at the moment!

Investigation Area

This week our investigation will be Nursery Rhymes. If you have any interesting items/objects, drawings, books etc... that relate to this, you are welcome to bring them in to add to the trolley.

Stickers will be given to children who bring something in to add to the investigation table.

We've had great fun printing with vehicles; investigating magnets; creating collages from natural materials; learning about Harvest; visiting our own School 'secret' garden; reading our favourite books; having fun in the mud kitchen; learning new songs; playing in our supermarket – counting out 'pennies'.

Halloween Disco

Halloween Disco Thursday
22nd October to be held in
the School.

5.15pm to 6.15pm for
Nursery Reception, Y1 and
Y2 (Parents to stay with
Nursery children)
6:30 to 7:30pm for Y3,4,5 &
6

Cost £1.50 per ticket
£2.00 on the door.



Diary Dates



Thurs 22nd Oct - Halloween
Disco

Fri 23rd Oct - Break up for
Half Term (*one week*)

Mon 2nd Nov - Nursery re-
opens

Fri 11th Dec - Nursery
Nativity play - 10.00am

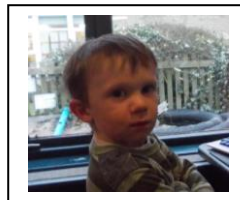
Wed 16th Dec - Nursery
Party

Fri 18th Dec - Break up for
Xmas (2 weeks + 2 days)

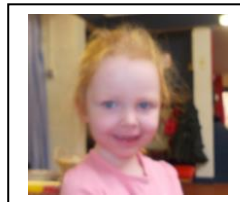
Wed 6th Jan - Nursery re-
opens.

Certificate Assembly

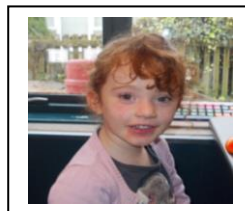
Montalbo Nursery Certificates were
awarded to:



Matthew for being a
whiz on the
computer – selecting
and working through
a programme
independently.



Isla for being able to
re-tell the story of
the Enormous
Turnip almost word
for word.



Peggy Sue for
initiating and playing
imaginary games
with all her friends.



Lexi Mae for learning
and joining in with
our daily songs.

Please try to be on time when collecting your
child; usual session collection times are
11.45am and 3.30pm, (if you are going to be late
please call to inform nursery staff).